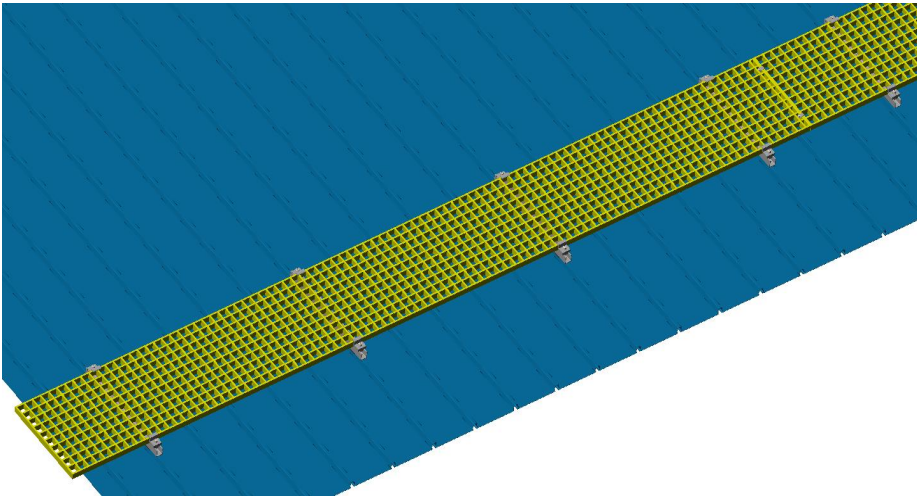




## FRP Walkway installation instructions

**This walkway: made of glass fiber reinforced plastic, light weight, high hardness, strong sun protection and anti-aging ability; Modular accessory assembly, easy to transport and install; The structure is stable, safe, and beautiful in appearance;**



# 1. Tools required for installation



wrench6mm



Monkey wrench



Phillips screwdriver



Cordless drill



Adjustable Wrench  
Suitable for bolt M10&12



Drill Bit 5mm



Measuring tape

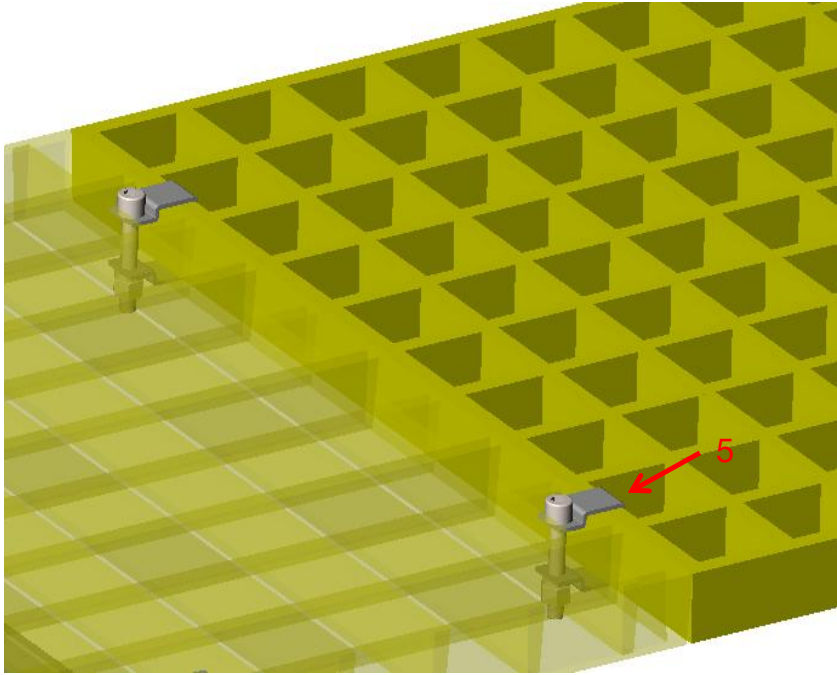
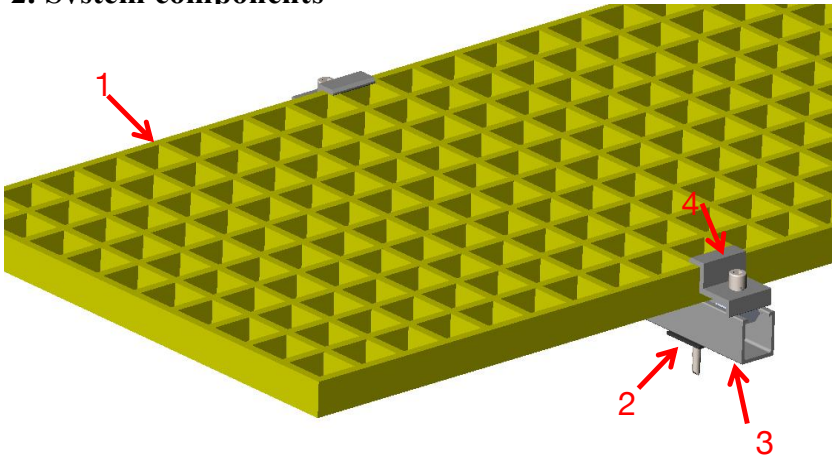


Rope

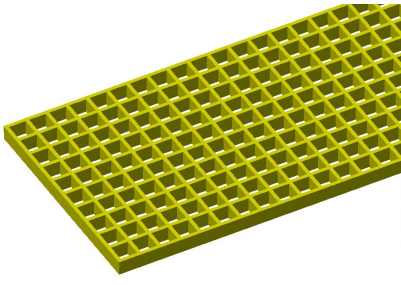


Wooden hammer

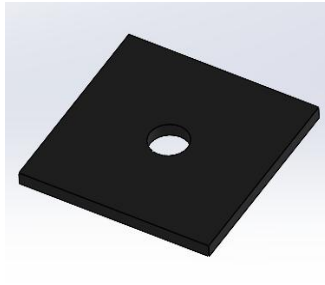
## 2. System components



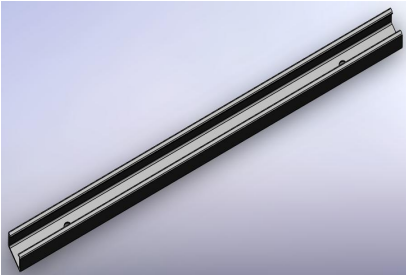
No.	Material	Product
1	FRP	FRP walkway
2	EPDM	EPDM
3	AL-6005-T6	Short Rail
4	AL-6005-T6	End clamp
5	Q235B	C clamp



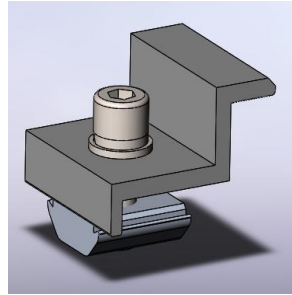
FRP walkway



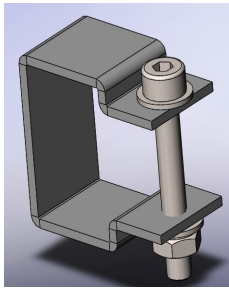
EPDM



Short rail



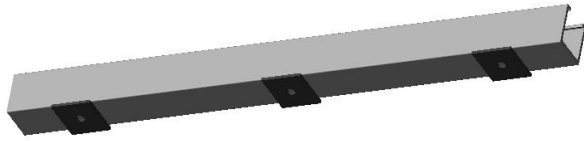
End clamp



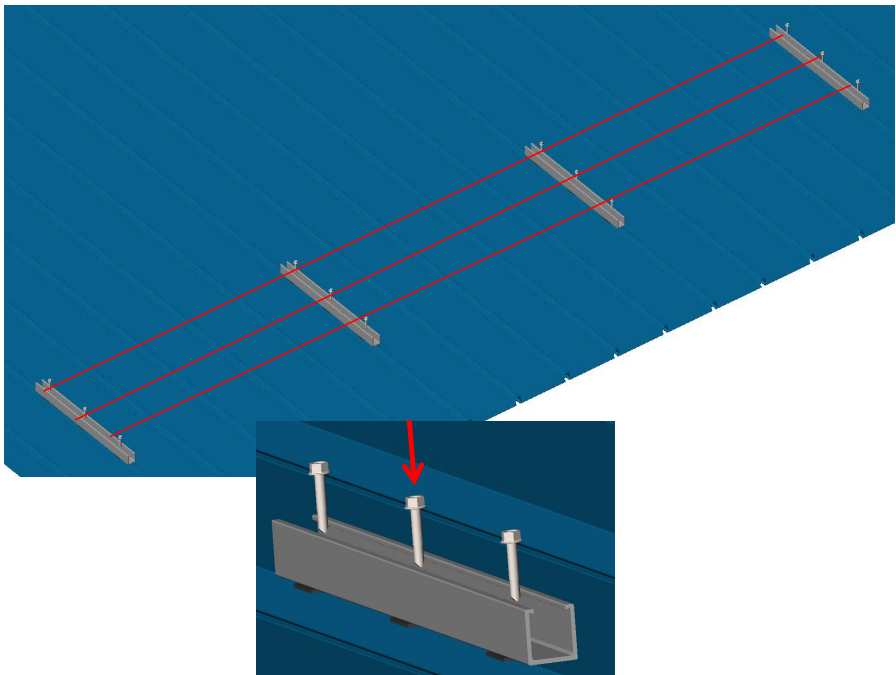
C - clamp

Step 1: Short Rail Installation

- a. Determine the position of the tapping screws on the guide rail according to the actual roof, and glue the EPDM to the corresponding position

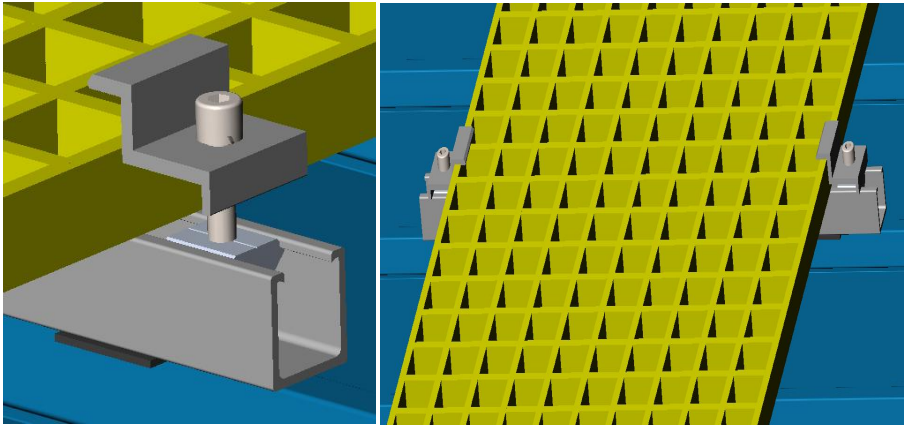


Pull the cable on the roof to determine the installation position of the guide rail, and then drive the tapping nail into the corresponding position to fix the guide rail

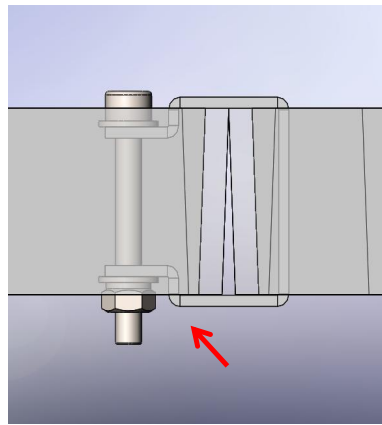
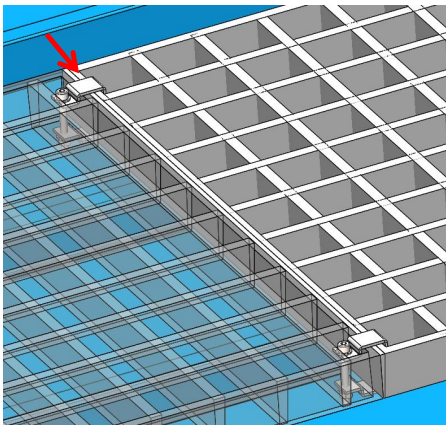


### Step 2: Walkway Installation

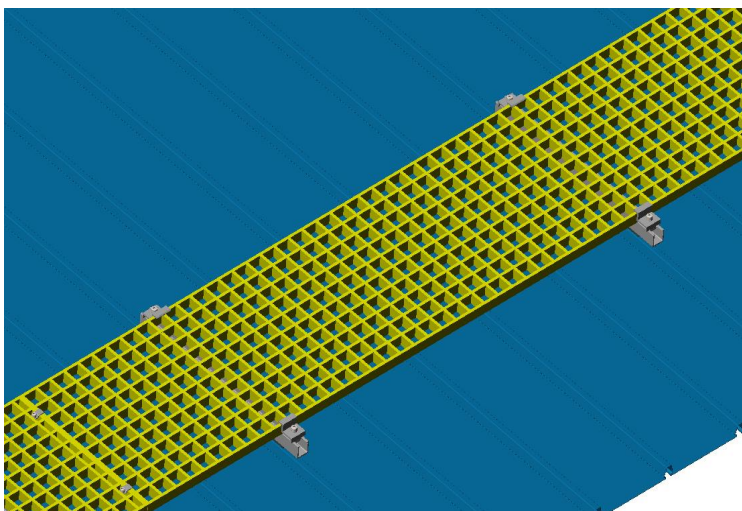
Install the walkway on the rail as shown in the figure below, and lock the nut against the walkway with end clamp at a suitable position to fix the walkway on the rail;



Follow the above steps to install the walkways according to the drawing, and connect the walkways with the C-clamp at the junction of the walkways (as shown in the figure below)



### Step 3: Completion drawing



#### Notice:

- 1、 The bracket structure may cause harm to body.
- 2、 The bracket components may cause harm to body.
- 3、 Be careful on installation site.

