



Maxkin X1
Security Alarm System
User Manual

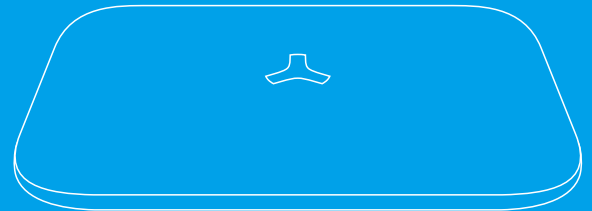


Table of Content

02	Get to Know Your System
05	Control Panel Installation
06	Working Status of Control Panel
08	Three Ways to Control System
09	Two Ways to Program the System
10	Included Accessories
10	Wireless Remote Control
12	Wireless P.I.R Motion Detector
15	Wireless Door/Window Sensor
17	Suggested Security System Setup
18	Wireless Accessories Enrolling, Clearing and Zone Setup
18	Connecting Wireless Accessories (Wireless Accessories Enrolling)
19	Delete All Enrolled Accessories
19	Restore System to Default Setting
20	Zone Setup
22	Connecting Wired Accessories & Linkage Electronic Facilities
24	Programming System by SMS Text
24	SMS Text Operation
33	Specification
34	Frequently Asked Questions



Get to Know Your System

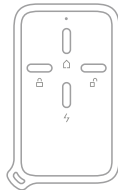
Control Panel

The control panel is the brain of security alarm system, which is able to communicate with all wireless sensors. When alarm occurs, the built-in siren will hoot loudly to deter intruders. The system will notify the family members by auto-dialing the preset phone numbers. The control panel can receive command from remote control, SMS Text or Apps command, and response to the alarm management in time.



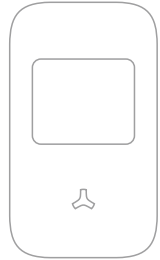
Wireless Remote Control

The remote control allow you to control your security system when you are away or come back. When emergency happens, press the emergency button to send an emergency signal to the control panel.



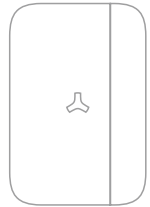
Wireless P.I.R. Motion Detector

The passive infrared motion detector is designed to sense human movement. It will detect the infrared radiation emitted from intruders and send the signal to control panel.



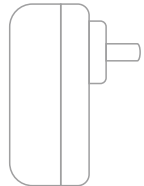
Wireless Door/Window Sensor

It is a magnetic sensor for any opening like door and window. It will send a wireless signal to the control panel, when a door or window is opened.



Power Adapter

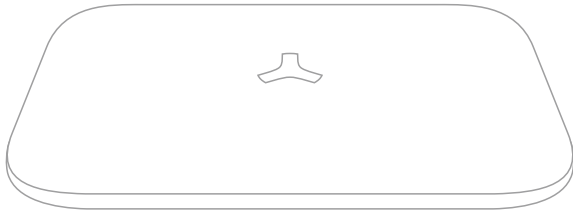
The power adapter is used to provide main power for the control panel. The built-in 7.2V/1000mA rechargeable battery enable the system working for 16 hours in the event of a power failure.



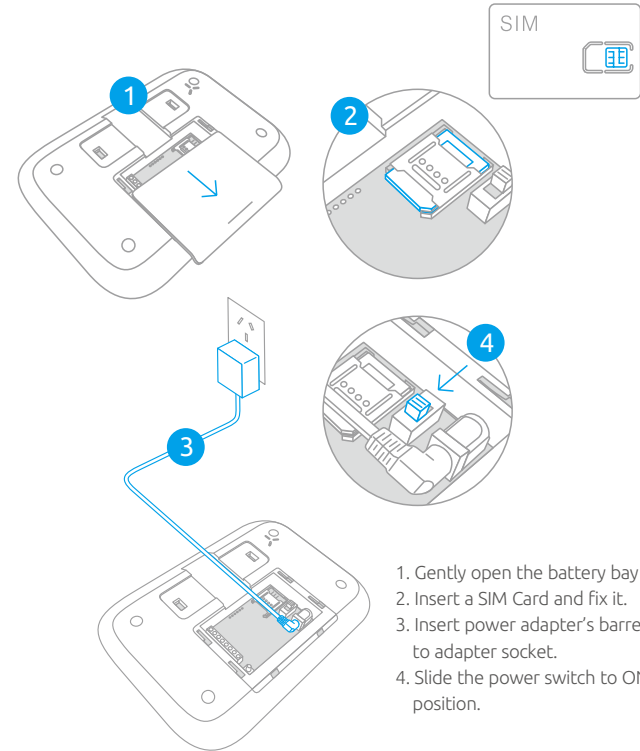


Features

- Cellular communication by SMS Text or Apps, easy control
- Up to 50pcs sensors & 10 remote controls can be expanded by auto learning
- 2 wired zone especially for smoke / gas / vibration / detector, IR beams etc.
- Customized Zone Names to recognize the location
- Text to preset 3 groups of SMS number & auto-dial 5 groups of phone number
- Internal siren sound and mute mode for optional
- Immediate SMS alerts for low battery of detectors, power lost and power recovery
- Built-in 7.2V/1000mA battery ensure system working properly for 16 hours after power lost
- Alarm output enable you to trigger the equipment as light, TV etc. to deter the intruder



Control Panel Installation



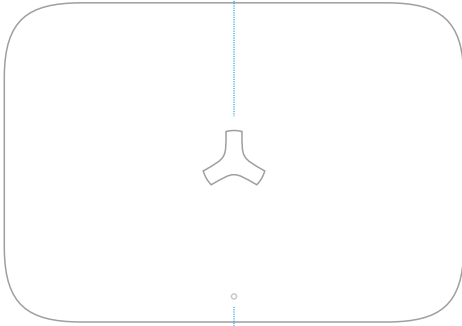
1. Gently open the battery bay cover.
2. Insert a SIM Card and fix it.
3. Insert power adapter's barrel plug to adapter socket.
4. Slide the power switch to ON position.

Note! Note! User have to store the phone number after SIM Card is inserted. When detectors are triggered, the alarm will be activated. The system will notify family members by sending out SMS alert or calling. Even the phone charge is overdue, the alarm will be activated when detectors are triggered.

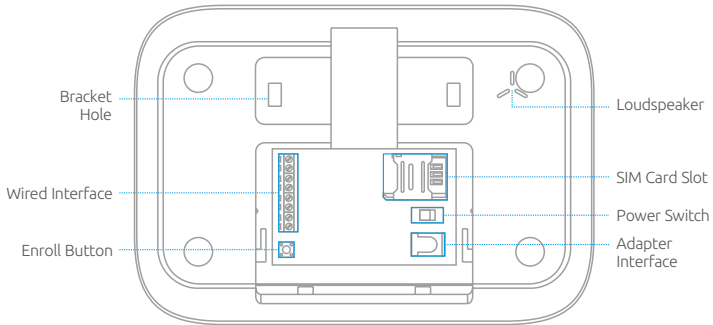


Working Status of Control Panel Appearance

White LED: Arming / Disarming
Red LED: Control Panel Status



Green LED: AC Power
Red LED: GSM Signal Indicator



Status LED Indication



White LED Normal On:
System disarmed.



White LED Goes Off:
System Armed.



LED Normally On in Red:
System in learning status or receiving GSM signal
LED Flashes Continuously in Red:
Searching GSM Signal.



Signal LED Indication



LED Light in Green
AC power connected



LED Light in Red
Bad GSM signal without
AC power



LED Light in Orange
Bad GSM signal with AC power



Three Ways to Control Your Security Alarm System

You can control your security alarm system by arming , disarming, stay arming or sending emergency signal via remote control, SMS text command and mobile apps.



1 Using a Remote Control:

The compact remote control is very easy to carry. The multi-function key enable you to arm the system when you are away, and disarm it when you come back. It's a simple and valuable tool which can be reached easily for the emergency happens at your home.

2 Using SMS Text Commands:

Please refer to Page 24 for details of SMS text command operation.

Disarm: Password#0

Arm: Password#1

Stay Arm: Password#2

Note! There's no command for sending emergency call.

3 Using Mobile Apps:

Please enter keyword“Maxkin”or“X1”to download the apps from the App Store or Google Play. Fill in the Control Panel Name & Sim Card Number of control panel to enter the user interface.

Note! There's no command for sending emergency call.



Two Ways to Program Your Security Alarm System

1 Method 1

Send a text of “?” to phone number of control panel, the system will reply an operation guide message to your phone. You can control the system by using the command codes listed. Please refer to page 24 for command codes.

2 Method 2

Please enter keyword “Maxkin”or “X1” to download the apps from the App Store or Google Play. Fill in the Control Panel Name & Sim Card Number of control panel to start programming.



Recommended! Simple and easy to use!

Included Accessories



Wireless Remote Control

The compact and elegant remote control is easy to carry. It is designed to fit on a key chain, a purse, a pocket or to be hidden in the car sun visor. This remote control act as multi-purpose key for arming, disarming, arming stay, and emergency call.

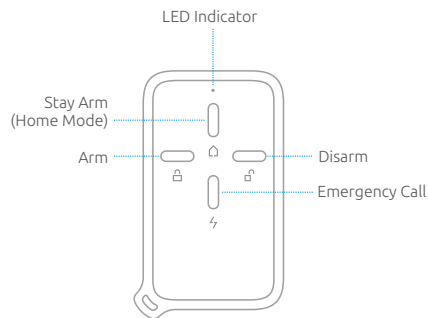
LED Indication:

LED Flashes:

Transmitting the signal to control panel.

Low LED Light:

Low battery, please replace the battery immediately.

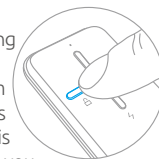


Button Manual



Arm

Press the arm button to **arm** the system before leaving your home, the siren beeps once to enter the arming state. Any detectors triggered will activate the system to alarm immediately. The system simultaneously calls the preset phone numbers. Once Exit delay function is set, system will be delayed arming accordingly. When you arm the system, the control panel will start to sound every 3 seconds, the sound will be increase in tempo for the last 7 seconds for the "hurry up" notification.



Disarm

Press **disarm** button before entering your home. Then you are able to move freely in your home without triggering the alarm. In the event of alarm, you can press this button to disarm the system and silence the siren.



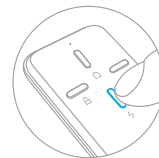
Stay Arm (Home Mode)

Press the **stay** button, the siren beeps once, system is in stay arm mode. The accessories in home mode are disarmed, this allows the user to move freely at home, while the rest of the system is fully armed, the accessories in normal zones will activate an immediate alarm when triggered.



Emergency Call

Once there's an **emergency** situation, no matter what state the alarm system is in, press this button for help, the system immediately goes into an alarm condition and notify your family.

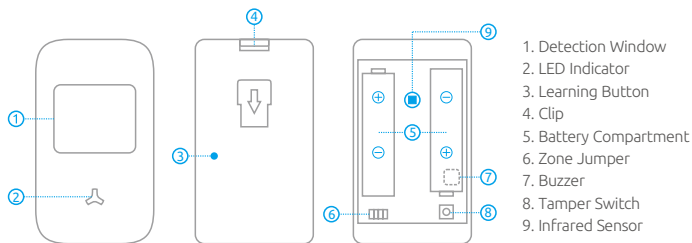




Wireless P.I.R Motion Detector

Features

PIR-600 passive infrared sensor with novel and beautiful style, perfect streamline can be easily installed. It is designed to detect human movement indoor. Adopted advanced fuzzy logic chip and intelligent analysis distinguish signal between body movement and interference to minimize false alarms. The built-in buzzer remind you low battery state and event of tamper alarm, which ensure your safety.



Infrared Sensor: Detects the infrared rays released by human body motion.

Please do not touch the surface and keep it clean.

Tamper Switch: Once the case is opened, the tamper switch will be triggered, generating an alarm signal.

Status Indicator



LED flashed once:

Movement is detected.



LED flashes 5 times, and buzzer beeps 5 times:

Power on, tamper alarm, low battery indication. If it's in low battery state, please replace it immediately.

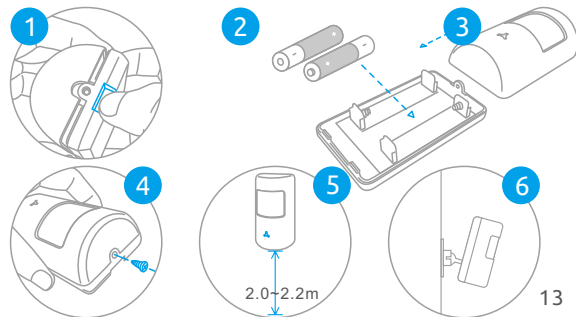
Installation & Walk Test

Testing Mode: When the power is on, the LED indicator flashes 5 times, and buzzer beeps 5 times to enter testing mode. In this state, every movement will trigger the detector and activate the alarm signal. Detector enters working mode after 20 detections.

Working Mode: In this state, the detector enters sleeping mode to save power after first detection. If there's no movement within 4 minutes, the detector goes back to the working state. If there's detection occurs within 4 minutes, the time detector goes back to working state will be added accordingly.

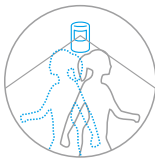
Installation:

1. The motion detector should be installed in entry or exit which intruder can easily enter.
2. The detector is more sensitive to cross-movement than to direct movement. The performance of the detector is optimal when detection direction is across the walking direction of intruders.
3. Press the clip, insert the battery properly, and then close the cover.
4. Using screws to fix the bracket of detector on the wall, attach the detector to the bracket.
5. Keep LED indicator at the right direction. The fixing height is about 2~2.2m from the ground.
6. Adjust installation height or bracket to change the detection distance and angle.



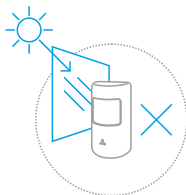
Walk Test:

1. When the power is on, the LED indicator flashes five times and buzzer beeps five times to enter working state.
2. Walk across detection area and watch the LED indicator to make sure it flashes once when detecting the movement. After one detection, it will detect once every one minute.

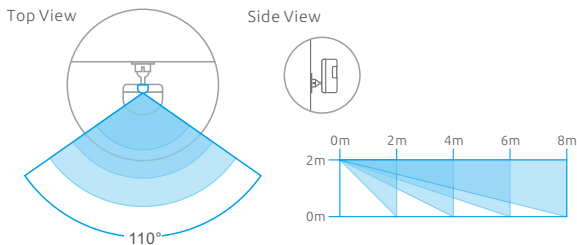


Notice

1. Avoid mounting the detector close to places where heat changes fast or air stream flows frequently. (ie. Air conditioner, tube light, oven, waver, refrigerator etc.)
2. Avoid it facing to window which can be easily interfered by complicated environment. (ie. sunlight, crowds, or flowing cars etc.)
3. The product can reduce the possibility of accident, but the user is advised to take all necessary precautions for the safety and the protection of the property.



Detection Area



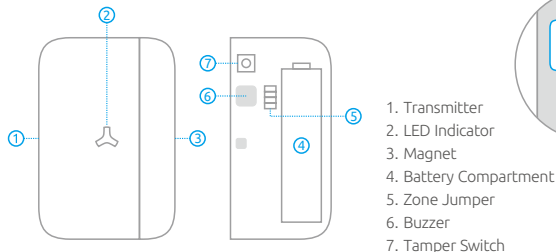
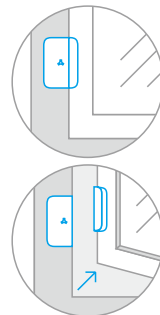
Connecting P.I.R. Motion Detector to Control Panel

The new-bought P.I.R. motion detector should be enrolled to the control panel before use. For specified operation, please refer to the manual of alarm system.



Wireless Door/Window sensor

The Door/Window Sensor can be installed on doors, windows and any other objects that open and close. The sensor transmits signal to control panel when the magnet mounted near the sensor is moved away. The tamper protection ensures that sabotage attempts to move the sensor will result in an alarm activation.



Tamper Alarm: Once intruder attempts to move the sensor, built-in buzzer beeps. The control panel will send tamper alarm message to user at the first time.

Zone Jumper: Please follow manual of alarm system for zone1 setup. The door sensor is set in normal zone as default.

Working Status:



LED flashes once:


Door or window is opened.
and the transmitter sends signal to the control panel.

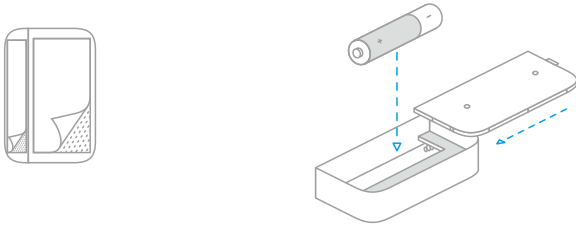


LED flashes 5 times, and buzzer beeps 5 times:

Tamper alarm, low battery indication. If it's in low battery state, please replace it immediately.

Installation:

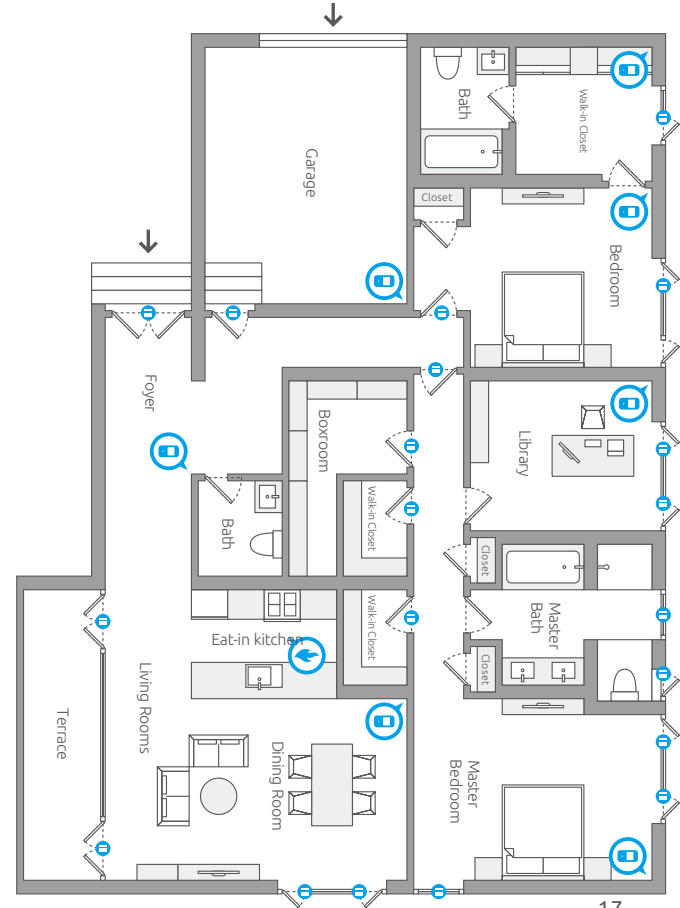
1. Open the case and install the battery properly.
2. Sensor can be installed on door or window that open and close.
Make sure the installed position have been already cleaned.
3. Remove the paper strip of the double-sided tape on the back of transmitter and magnet. Carefully mount the transmitter on the door frame and the magnet on the door.
4. Keep LED Indication light  at the right direction.
Make sure the magnet is on the right of the transmitter.
5. Place the transmitter in the desired location, mount the magnet no more than 1cm away from the transmitter.
6. Avoid mounting sensors in areas with a large quantity of metal and electric wiring.



Note! The door sensor is set in Normal Zone1 as default. It will cause on immediate alarm if the magnet depart from the transmitter more than 2cm in arming state.



Suggested Security System Setup

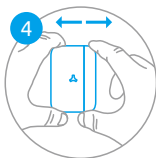
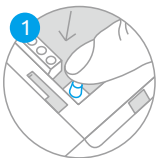


Wireless Accessories Enrolling, Clearing and Zone Setup



Wireless Accessories Enrolling

1. Press the Enroll Button , the control panel enters enrolling status, the LED lights up in red. (Press again the Enroll Button within 20 seconds to exit enrolling state.)
2. Connecting PIR Sensor to Control Panel:
Press the test button on the back of PIR Sensor.
3. Connecting Remote Control to Control Panel:
Press any button on the remote control.
4. Connecting Door Sensor to Control Panel:
Depart the transmitter and magnet
5. The enrollment is successful after beeps are heard and LED light flashes once.

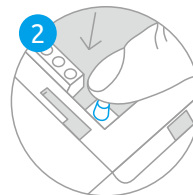


Note! Wireless siren is not included as wireless accessory. For specific details, Please refer to the manual of siren. If accessories zones are changed, you have to reconnect the accessories to the control panel.



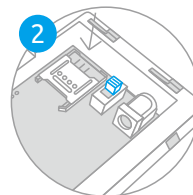
Delete Enrolled Wireless Accessories

Press and hold the enroll button for 6 seconds until one beep is heard. All enrolled wireless accessories will be deleted.



Restore System to Default Settings

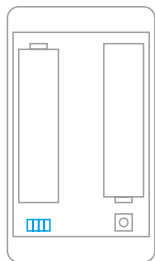
1. Press and hold the enroll button, slide the power switch to OFF position to cut off the power supply.
 2. Then slide the power switch to ON position.
 3. Do not release the enroll button until one beep is heard. All preset number will be deleted at once and the system is restored to default setting successfully.
- Note!** Restoring operation will not delete the enrolled accessories.



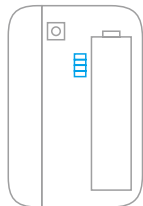


Zone Setup

PCB Diagram-Zone Jumper



PIR Motion Detector

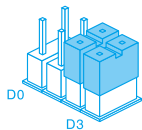


Door/Window Sensor

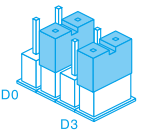


Normal Zone Setup

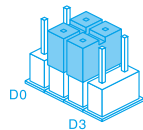
The accessory is set in normal zone (immediate alarm zone) as default. Once triggered in arming state, the system will receive signal and activate the alarm immediately.



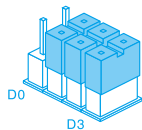
Wireless Zone 1



Wireless Zone 2
(Single Delay Zone)



Wireless Zone 3



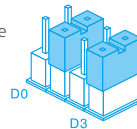
Wireless Zone 4

Note! PIR Motion Detector is set in stay (home) mode zone 1 as default. Door/Window Sensor is set in Normal Zone 1 as default. If accessories zones are changed, you have to reconnect the accessories to the control panel.



Single Delay Zone Setup

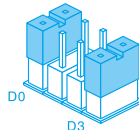
If the Exit/Entry Delay Time is set, accessories in single delay zone, will be delayed for arming and alarming, Home Mode Zone accordingly. But accessories in Normal Zone Home Mode Zone and 24-Hour Zone will not be delayed.



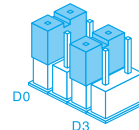
Stay Mode (Home Mode) Zone Setup

Single Delay Zone

Stay mode is known as "part arm". When system is stay armed, the accessories in home mode are disarmed. This allows the user to move freely at home. While the rest of the system is full armed, the accessories in normal zones will activate an immediate alarm when triggered.



Home Mode 1
(Wireless Zone 5)

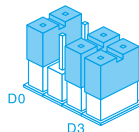


Home Mode 2
(Wireless Zone 6)

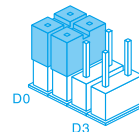


24-Hour Zone Setup

No matter what state the alarm system is in, once the accessories in 24-Hour zone are triggered, the control panel will get the signal and alarm immediately.



24-Hour Zone 7

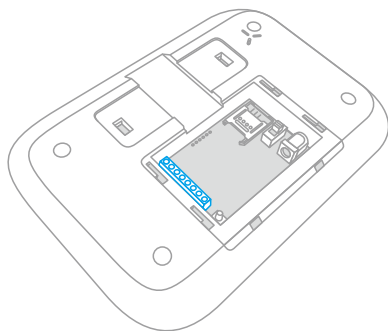
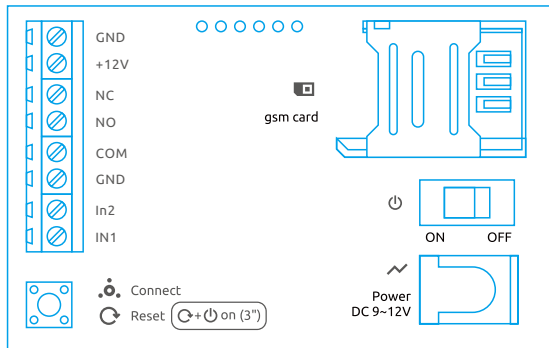


24-Hour Zone 8

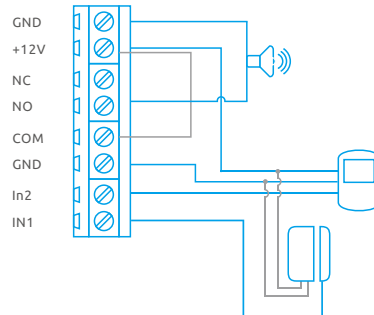
Note! It's highly recommended to set the smoke detector, gas detector and perimeter detectors at 24-Hour Zone.



Connecting Wired Accessories & Linkage Electronic Facilities



Ground
Power Output for
Wired Accessories
Normal Close
Normal Open
Common Port
Ground
Wired Interface 2
Wired Interface 1



Wired Accessories:

X1 support 2 groups of wired accessories.

Please choose the wired sensor types after connected.

Connect Wired Sensor to Wired Zone 1

1. Choose Type of Sensor, if it's N.C. Type sensor, link +12V block and N.O. block.
2. Connect N.C. Type Door Sensor to Wired Zone. One cable for the IN1 block, another for GND block.

Note! The main panel supplies 1 group of DC12V/1A DC output for wired sensors. If no power supply is needed for wired sensor, don't connect to +12V block.

3. Send text 74 to choose wired sensor type to be N.C.
4. Test if the alarm occurs when wired sensor is trigger.

Connect Wired Siren

Connect the Negative Pole to GND block, the Positive Pole to N.O block. Then link COM block and +12V block.

Linkage Electronic Facilities:

X1 is able to turn on electronic facilities like lights, or fences to deter the intruder immediately in the event of alarm.



Programming System by SMS Text Operation

SMS Text Operation

It's easy for users to manage functionality through your cell phone by sending SMS text commands listed as below. Send a text of "?" to the SIM card number of control panel, the system will reply you a main operation guide menu.

Send "password#command code" (original password is 1234) to setup, for example "password#5" to store phone numbers.

Note! Users have to store the phone number after Sim Card is inserted so that the control panel can be remotely controlled and when alarm is activated, it will send and receive messages.

Send this operation code from your cell phone:

?

SMS reply you will receive:

Disarm: 0
Arm Away: 1
Arm Stay : 2
Status Inquiry: 3
Alarm Management: 4
Store Phone Numbers: 5
Change Zone Name: 6
Other Setup: 7
System Language: 8

Disarm

Send this operation code from your cell phone:

1234#0

System disarmed with all detectors deactivated.

SMS reply you will receive:

System Disarmed.

Arm

Send this operation code from your cell phone:

1234#1

System fully armed with all detectors activated.

SMS reply you will receive:

System Armed in Away Mode.

Arm Stay

Send this operation code from your cell phone:

1234#2

The Arm/Stay function will arm the system with sensors in normal zone activated immediately, but sensors in home mode zone disabled.

SMS reply you will receive:

System Armed in Stay Mode.



Status Inquiry

Send this operation code from your cell phone:

1234#3

SMS reply you will receive:

(Please Text Below Command Code to Inquiry the System Setting)
31: Control Panel Status
32: IMEI Information

System Status Inquiry

Send this operation code from your cell phone:

31

System Status:
Away Armed/Disarmed/Stay Armed
AC Power: On/Lost/Recovered
Alarm Type: Audible /Silent
Local Siren OFF/ON
SMS Alert for Keyfob Operation: On/Off
Wired Sensor Type: N.O/N.C

SMS reply you will receive:

System Status: Away Armed
AC Power: On
Alarm Type: Audible
Local Siren OFF
SMS Alert for Keyfob Operation: Off
Wired Sensor Type: N.C.

IMEI Information Inquiry

Send this operation code from your cell phone:

32

SMS reply you will receive:

IMEI No.:*****

IMEI is International Mobile Equipment Identity number, consist of 15 digits "electronic serial number" which is unique to identify valid devices. Every alarm panel will be assembled with an unique IMEI number to make sure it's original from manufacture.



Alarm Management

Send this operation code from your cell phone:

1234#4

SMS reply you will receive:

(Please Text Below Command Code to Manage the System)
41: Turn On the Local Siren
42: Turn Off the Local Siren
43: Two-way Talk

Turn On the Local Siren

Send this operation code from your cell phone:

41

SMS reply you will receive:

Local Siren: On

Turn Off the Local Siren

Send this operation code from your cell phone:

42

SMS reply you will receive:

Local Siren: Off

43

Send '43' to the SIM card number. The control panel will call back. You can now listen in and have a two-way talk.



Store Phone Numbers

Send this operation code from your cell phone:

1234#5

Forward (copy and paste) this text message to control panel phone number. Add phone numbers that you want to control over. Phone numbers includes 3 SMS numbers (where you want security message and alerts sent) and 5 Tel numbers (to receive alarm calls). It's recommended to set the numbers according to the priority.

Note! Phone numbers which haven't been stored will be refused.

SMS reply you will receive:
(Fill in the Phone Numbers and Text to System)

SMS:
1:
2:
3:
TEL:
1:
2:
3:
4:
5:

Phone Numbers Stored.

SMS:
1: *****
2: *****
3: *****
TEL:
1: *****
2: *****
3: *****
4: *****
5: *****



Change Zone Name

Send this operation code from your cell phone:

1234#6

Forward (copy and paste) this text message to control panel phone number. Add zone name, then send it. Zone information includes six wireless zone, two 24-hour zone . Two wired zone name cannot be changed .
Wireless Zone 2 is Single Delay Zone.
Wireless Zone 5 is Home Mode 1
Wireless Zone 6 is Home Mode 2

Character Limits

16 characters for English.

Note! After zone names are changed, if any alarm occurs, users can identify the sensor types and location quickly.

SMS reply you will receive:
(Change Zone Name and Text to System)

1: Wireless Zone 1
2: Wireless Zone 2
3: Wireless Zone 3
4: Wireless Zone 4
5: Wireless Zone 5
6: Wireless Zone 6
7: 24H Zone 7 Alarm
8: 24H Zone 8 Alarm

Zone Name Changed.

1: LivingRoom Door
2: LivingRoom PIR
3: Bedroom Door
4: Library PIR
5: Garage Door
6: Bedroom PIR
7: Kitchen Gas
8: Kitchen Smoke



Other Setup

Send this operation code from your cell phone:

1234 #7

71-72: User can set the siren to be audible or silent when it's alarming.

73-74: Choose the types of wired sensors after they are connected.

75-76: When system alarms, user can choose to get SMS alerts or not if someone disarm it by keyfob.

77: Change the password

78~79: Set exit/entry delay time for accessories in single delay zone. It allows users to leave or enter home within the programmed time without activating an instant alarm.

Send this operation code from your cell phone:

71

72

73

SMS reply you will receive:

Alarm Type:
71: Audible(Default)
72: Silent
Wired Sensor Type:
73: N.O.
74: N.C. (Default)
SMS Alert for Keyfob Operation:
75: On
76: Off (Default)
Change Password:
77: New Password
Alarm Delay:
78: Exit Delay Time
79: Entry Delay Time

SMS reply you will receive:

Alarm Type: Audible

Alarm Type: Silent

Wired Sensor Type: N.O.

Send this operation code from your cell phone:

74

75

76

Old Password#77
#New Password#

78#Exit Delay
Time#

79#Entry Delay
Time#

SMS reply you will receive:

Wired Sensor Type: N.C.

SMS Alert for Keyfob Operation: On

SMS Alert for Keyfob Operation: Off

Password has been reset!

Exit Delay Time (0~300sec): "***"S

Entry Delay Time(0~300sec): "***"S

Note! The Exit/Entry Delay Time is working for accessories in Single Delay Zone. The alarm will be activated immediately when accessories in other zone are triggered. Once entry/exit delay time is set, when system is armed, one beep will be heard every 3 seconds to remind users to leave. The reminder exit notification will speed up in the last 7 seconds. Once an entry is detected, it will allow the user to enter and disarm the system within the programmed entry time.

Change Language

Send this operation code from your cell phone:

password#8

81

82

83

SMS reply you will receive:

81:Default Language
82:Customized Language
83:Customized Language

Language has been changed to ***

Language has been changed to ***

Language has been changed to ***

Other System Alert SMS

"*****"Alarm!

Detector Tamper Alarm!
(Please Check the Sources.)

Control Panel AC Power
Lost!

Detector Low Battery!
(Please Check the Sources.)

Please Enter Correct
Command Code!

Control Panel AC Power
Recovery!

Control Panel Low Battery!

Emergency Call!



Specifications

Product name :	GSM/SMS Security Alarm System
Model No. :	MK-X1
Control panel's power supply :	Input: AC 110~240V/50~60Hz Output: DC 12V/1000mA
GSM working frequency :	900/1800/1900MHz
Standby current :	80mA
Alarm maximum current	1500mA
Internal battery backup :	Lithium Battery: 7.2V/1000mAh
Internal siren :	90dB
Allowed amount of expandable wireless accessories	10pcs remote controls 50pcs wireless accessories
Radio frequency	315MHz / 433MHz (±75KHz)
Housing material	ABS plastic
Operation condition:	Temperature: -20°C~55°C Humidity: ≤ 80%(non-condensing)
Size (L x W x H) :	18×12.6×2.6cm



Frequently Asked Questions

X1

1. I want to know which room alarms, how to setup?

There're 6 wireless zone, 2 emergency zone, and 2 wired zone, name of wired zone cannot be changed.

Step 1: Set the wireless sensors in same room at the same zone, following the instruction image of zone jumper setup on manual Page20-21.

Step 2: Sending the text command "password#6" to change the zone name for different rooms by better memory. When alarm occurs, you will get the notified SMS text message of zone alarm information, such as "bedroom alarm!"

Note! 24H zone is for emergency use, especially for smoke alarm, gas detector. Once it's triggered, the system goes alarm immediately no matter what status is.

2. Will my X1 alarm system work in the event of a power failure?

Yes, They system has rechargeable back-up batteries which can support it working for 16 hours. When the power is recovered, the battery will be recharged. You will get the text of "Control panel AC recovery".

3. The Sim Card was installed in the control panel, but it cannot connect to the GSM cellular network.

- A.** X1 Alarm System support only GSM Sim Card, Sim Card for CDMA network will not work.
- B.** Make sure to slide the power switch to ON position after sim card is inserted.
- C.** Watch the status LED light, if LED flashes continuously in red, the system is still searching GSM signal. If signal LED lights in red or orange, the GSM signal is really bad, please move the control panel near the outside wall or window to improve the signal reception.

4. How to download the apps for Maxkin alarm system?

Go to App Store or Google Play to download the application by entering the keyword of "Maxkin", "Maxkin alarm" "X1 alarm".

5. If someone arm or disarm the system, will I be notified?

Yes. If you using SMS text commands or apps to control the system, you will get reply as well. If you need the SMS alerts of remote control operation, you have turn on the function of SMS Alert for Keyfob Operation, Please send "Password#75" to active it.

Wireless Door/Window Sensor

1. Why departing the door transmitter and magnet, doesn't trigger the alarm?

- A.** Make sure the LED indicator light up red when it's departed from the magnet, if not, the door sensor is in low battery, please replace it.
- B.** Check if the magnet is on the left of transmitter.
- C.** If the door is in metal material, the signal will be interfered.
- D.** Please make sure the distance between transmitter and magnet is more than 2cm.

2. Why the door sensor beeps?

If the LED indicator flashes 5 times, and buzzer beeps 5 times, please check if the sensor is in low battery or tamper alarm according to the SMS received. If it's low battery, please replace the battery; If it's tamper alarm, check if the tamper switch is triggered or any intruders break in.

Wireless Remote Control

1. When you arm and disarm the system by the remote control, the control panel doesn't response.

- A.** Make sure you've pressed the arm/disarm button more than 2 seconds. (Don't release it too fast, otherwise the system will not get the signal)
- B.** When you press the button, the LED light up in red, if there's no LED light, please replace the battery.

PIR Motion Detector

1. Why PIR Motion Detector beeps without detecting intruders?

If PIR Motion Detector beeps, and LED indicator flashes continuously, the detector is in low battery. Please change the battery immediately.

2. Why PIR Motion detector does not detect movement?

- A. Please make sure the control panel is in arming status, not at stay (home)mode or disarming status.
- B. Please make sure the LED of PIR motion detector lights up when you walk in the detection area.
- C. Movement should cross the detection and within 8 meters range.
- D. The detector enters sleeping mode to save power after first detection. If there's no movement within 4 minutes, the detector goes back to the working state. If there's detection occurs within 4 minutes, the time detector goes back to working state will be added accordingly.

3. If the PIR motion detector pet-immunity?

No. The PIR supplied in standard kit is normal PIR. If you have pets at home, please adjust the installing height to allow your pets to roam below the mounting height of the unit without causing alarms.

4. There's no one passerby the room, but the detector trigger the alarm

- A. Check if there's any pet at home, the PIR supplied in the standard kit is normal one, not pet-immune one.
- B. Please avoid mounting the P.I.R. motion detector at the place where rapid heat changes such as window, air conditioner, light, electric heater, refrigerator, oven, stove etc.
- C. Avoid strong sunlight.
- D. The installation height and range should be in the detection area.