

DS-2CV1F43G2-LIDWF(B) 4 MP Indoor Wi-Fi Fixed PT Turret Network Camera



- Support Wi-Fi 6
- Built-in microphone and speaker, support two-way audio
- Good night-time performance with up to 20 m IR and 15 m white light
- Digital WDR, HLC, BLC, 3D DNR
- High quality imaging with 4 MP resolution

▪ Specification

Camera	
Image Sensor	1/3" Progressive Scan CMOS
Max. Resolution	2560 × 1440
Min. Illumination	Color: 0.01 Lux @ (F2.0, AGC ON), B/W: 0.005Lux @(F2.0, AGC ON), 0 Lux with IR
Lens	
Focal Length	2.8 mm 4 mm
FOV	4mm): Horizontal field of view: 69.9°, vertical field of view: 34.9°, diagonal field of view: 84.9° 2.8mm: Horizontal field of view: 91.1°, vertical field of view: 47.9°, diagonal field of view: 110.8°
Aperture	4mm: F1.6 2.8mm: F2.0
Illuminator	
Supplement Light Type	IR, White Light
Supplement Light Range	IR distance: up to 20 m, White light distance: up to 15 m
IR Wavelength	850 nm
PTZ	
Movement Range (Pan)	0° to 350°
Movement Range (Tilt)	0° to 75°
Pan Speed	Up to 20°/s
Tilt Speed	Up to 10°/s
Video	
Main Stream	50 Hz: 25 fps (2560 × 1440, 1920 × 1080, 1280 × 720) 60 Hz: 20 fps (2560 × 1440), 24 fps (1920 × 1080, 1280 × 720)
Sub-Stream	50 Hz: 25 fps (768 × 432) 60 Hz: 30 fps (768 × 432)
Video Compression	H.265, H.264, MJPEG
Video Bit Rate	32 Kbps to 8 Mbps
H.264 Type	Baseline Profile/Main Profile/High Profile
H.265 Type	Main Profile
Audio	
Audio Compression	G.711ulaw/AAC-LC
Audio Bit Rate	AAC-LC: 16 Kbps, 32 Kbps, 64 Kbps; G.711ulaw: 64 Kbps
Audio Sampling Rate	8 kHz/16 kHz
Environment Noise Filtering	Yes
Network	
Protocols	IPv4/IPv6, HTTP, QoS, SMTP, NTP, RTSP, RTP, RTCP, TCP/IP, UDP, DHCP, Bonjour
API	Open Network Video Interface (Version 18.12, Profile S, Profile G, Profile T), ISAPI, SDK, Hik-Connect
User/Host	Up to 32 users. 3 levels: Administrator, Operator and User
Security	Password protection, complicated password, watermark, basic and digest authentication for HTTP, WSSE and digest authentication for Open Network Video Interface, security audit log, host authentication (MAC address)

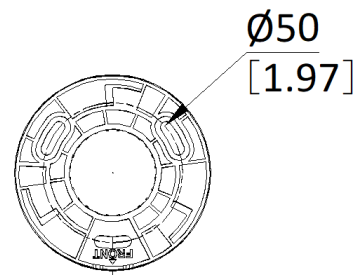
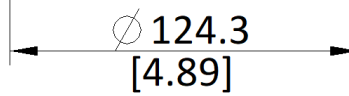
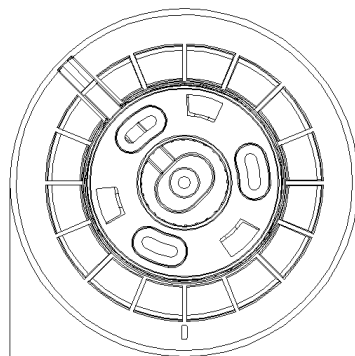
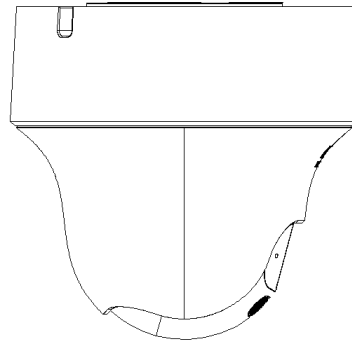
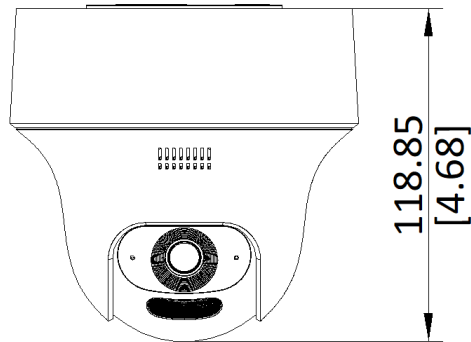
Client	Wired network: Hik-Connect, iVMS-4200 Wi-Fi: iVMS-4200 *Wi-Fi connection with Hik-Connect directly is not possible
Wireless (Wi-Fi)	
Wi-Fi Protocols	IEEE802.11b,IEEE802.11g,IEEE802.11n
Frequency Range	2.4 GHz to 2.4835 GHz
Channel Bandwidth	20/40 MHz
Modulation	802.11n: QPSK, BPSK, 16QAM, 64QAM, 802.11b: CCK, QPSK, BPSK, 802.11g: QPSK, BPSK, 16QAM, 64QAM
Transfer Rate	11n: up to 300 Mbps
Image	
Image Settings	Saturation, brightness, contrast, and sharpness adjustable by client software or web browser
Wide Dynamic Range (WDR)	Digital WDR
Image Enhancement	BLC, HLC, 3D DNR
Privacy Mask	4 programmable rectangle privacy masks
Interface	
Ethernet Interface	1 RJ45 10M/100M self-adaptive Ethernet port
Built-in Microphone	1 built-in microphone
Built-in Speaker	1 built-in speaker
Event	
Basic Event	Motion detection (support alarm triggering by specified target types (human and vehicle)),video tampering alarm,exception
Linkage	notify surveillance center, send email, trigger recording, trigger capture, audible warning
General	
Power	12 VDC \pm 25%, reverse polarity protection, 0.75 A, max. 9 W, \varnothing 5.5 mm coaxial power plug
Dimension	\varnothing 124 mm \times 119 mm (\varnothing 4.89" \times 4.68")
Weight	Weight:Approx. 290 g (0.6 lb.) With Package Weight:Approx. 390 g (0.8 lb.)
Material	Plastic
Operating Condition	-10 °C to 40 °C (-14 °F to 104 °F). Humidity 90% or less (non-condensing)
General Function	Heartbeat,anti-banding,mirror,password protection,password reset via email
Approval	
Protection	IP54
General	
Language	English, Ukrainian

▪ Available Model

DS-2CV1F43G2-LIDWF(2.8mm)(B)

DS-2CV1F43G2-LIDWF(4mm)(B)

▪ Dimension



Unit: mm [inch]

SCALE	1:1
-------	-----

Headquarters

No.555 Qianmo Road, Binjiang District,
Hangzhou 310051, China
T +86-571-8807-5998
www.hikvision.com



Follow us on social media to get the latest product and solution information.

