

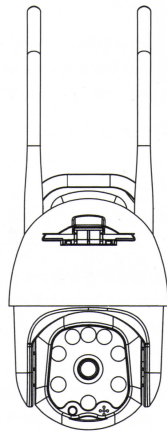


# WIFI PT CAMERA

Quick Manual for Android and iOS

## Packing list

After open packing list box, please check product body and accessories as below:

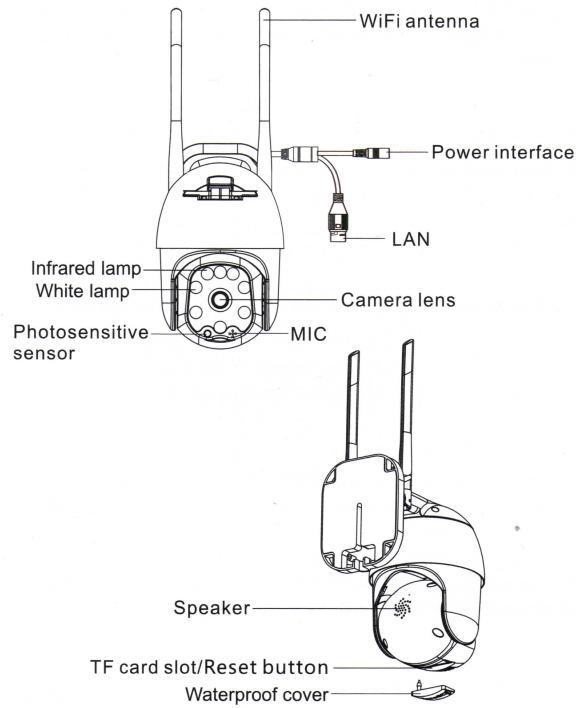


Camera x1

1

## Interface

Before use, please pay attention to the interface and button of camera.



Note:

Reset button : Long press to restore the camera to factory settings.

2

## Operation

### 1.Download APP

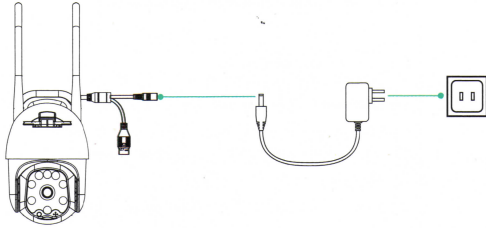
Tips one: Scan QR code.



Tips two: Search "iCSee" in the App store and download.

### 2.Power on

Use the power adapter to connect the camera power interface and the power socket, As shown in the figure below.



#### Note:

If you need local storage, please install the memory card firstly, then power on the device (the memory card does not support hot swapping, please plug and unplug the memory card when the device is powered off). **Cloud storage is recommended, which is safe and convenient.** Details See "Step 4" for operation.

3

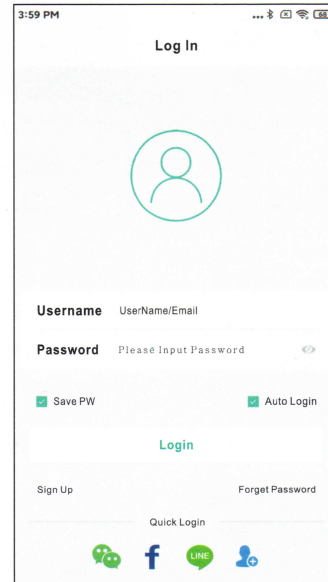
## 3.Camera configuration

### 1.Wireless network configuration:

#### 01.User login

- Connect your phone to WiFi.
- Open the iCSee app, register an account and login(Figure 1).

Figure 1



4

## 02.Quick configuration

- After successful login, Click the "+" button (Figure 2).
- Click the "WiFi Camera" ( Figure 3 ) .
- Set network configuration according to the camera's voice prompts and the APP interface step-by-step guide. When the camera emits a "Connect router successfully" prompt, it means that the camera has successfully configured the network.

Note: If the camera does not have a prompt sound for a long time, you can press and hold the camera Reset button until you hear the prompt " Restore factory settings, please do not power off "and release it to restore the camera to factory settings and then configure the network.

Figure 2

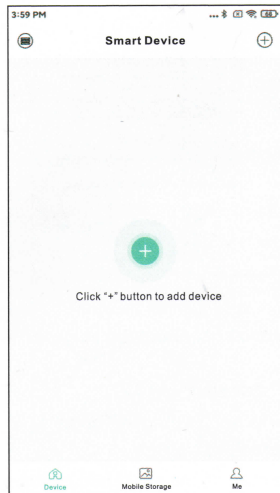
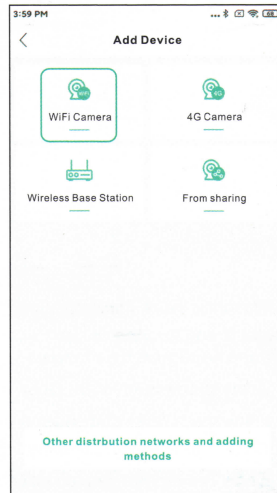


Figure 3



- After the network configuration is successful, follow the instructions on the APP interface to set the camera password and name.
- After the configuration is completed, the device is displayed in the device list interface. Click to open the real-time preview screen, and carry out relevant operations and settings(Figure 4).

Figure 4



6

- After the configuration is completed, the device is displayed in the device list interface. Click to open the real-time preview screen, and carry out relevant operations and settings(Figure 4).

Figure 5

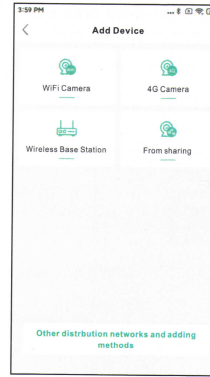
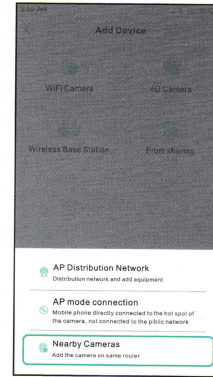


Figure 7



7

Figure 6



## 2. Wired network configuration:

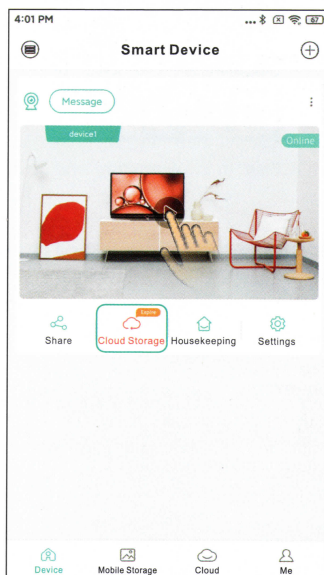
Note: If you choose to use network cable to connect the camera, please configure it as follows.

- After successful login, Click the "+" button (Figure 2).
- Click the "Other distribution networks and adding methods" , Click the "Nearby Cameras" ( Figure 5,6 )
- Enter the device search interface and click the searched camera to add a device (Figure 7).

#### 4.Cloud storage

- Steps to open cloud storage: click the "cloud storage" or "cloud" icon in the device list interface (Figure 8), and follow the guidance of the app interface to understand and open the cloud storage package, with a variety of packages available.

Figure 8



8

#### FAQ

##### Q: How do cameras store video?

- A:
1. Local TF card storage, maximum support up to 128G TF card after full automatically delete earlier video, overwrite video.
  2. Cloud storage.

##### Q: what should I do if forget the device password?

- A: Re-connect and set a new password after the device is restored to factory settings.

**Note:** The device password involves privacy security, please be careful.

##### Q: How to do if the camera is not connected or offline?

- A:
1. Check if the camera power or network of router normally .
  2. Plug the camera power to restart camera.
  3. Restore the camera to factory settings.

##### Q: Is 5g router supported ?

A : If you use 5g router, 5G and 2.4G use the same connection hotspot (that is, SSID is the same), you can connect directly. If 5G and 2.4G are not the same connection hotspot (that is, SSID is different, generally SSID of 2.4G is xxxx-2.4G, SSID of 5G is xxxx-5G), please connect WiFi of mobile phone to hotspot of xxxx-2.4G of router before configuring camera.

9

## Notice

1. Please change the user password while using this product to avoid being misappropriated by criminals.
2. Do not install the device in a place that is damp, dusty, or accessible to children.
3. Please use and store within the allowable temperature and humidity range, and do not disassemble the equipment at will.

## Directions

1. Please refer to the actual product, the manual is for reference only.
2. The APP and product firmware will be updated from time to time. You can upgrade to the latest firmware online by yourself without notice. The manual is for reference only.
3. The manual may contain technically inaccurate parts or parts that are inconsistent with product functions or printed errors. Please refer to our company's final interpretation..

## Warranty Card

Product Name		Model	
Purchase Date		Purchase Store	
Cause			
Process			
Customer Name		Customer Gender	
Customer Phone		ZIP	
Address			

Warranty period: one year.  
This warranty card is only for our company's products.