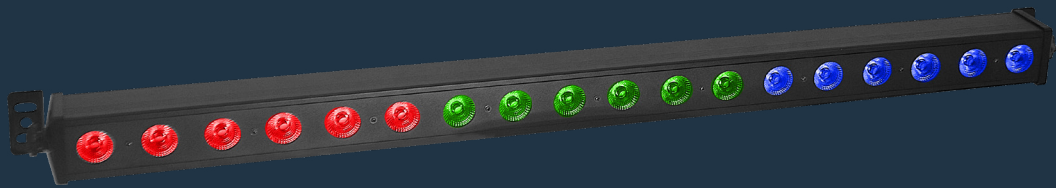


QUADBAR 18

18 LED WASHER WALL LIGHT BAR



USER MANUAL | MANUAL DE USUARIO

PLEASE READ THE INSTRUCTIONS CAREFULLY BEFORE USE
POR FAVOR LEA LAS INSTRUCCIONES ANTES DE USAR



1. OVERVIEW

QUADBAR 18

4 LEDs RGBW DE 3W

QUADBAR 18 is a segment-controllable LED bar featuring 18 x 4W LEDs with quadcolor technology that enables smooth RGBW mixing without multicolor shadows. The unit has a 35° beam angle and is ideal for both surface washing and striking visual effects, thanks to its 3-segment control of 6 LEDs each. **QUADBAR 18** has a 0-100% electronic dimmer and 5 modes of operation, including pre-set programs and a 4, 8 or 15 channel DMX mode.

Physical

- 4 Digits LED Display
- DMX Connectors: 2 XLR Connectors (XLR-3 In & Out)
- IEC power connector.
- Weight: 4 kg
- Dimensions: 1050x105x80 mm.

Specifications

Source & Optics

- Light source: 18 x 4W RGBW LEDs (1R, 1G, 1B, 1W)
- Beam angle: 35°
- Average lifespan: 50,000 hours

Effects & Functions

- Segment control: each group of 6 LEDs can be controlled independently.
- Quad-color LED technology: Smooth RGBW mixing without shadows.
- Dimmer: Full range 0-100% general & for all colors.
- Strobe effect.
- Integrated programs.

Control

- DMX Channels: 4/8/15
- Operation modes: DMX, Master/Slave, Auto, Static & Auditorhythmic.

2. SAFETY INSTRUCTIONS



For your own personal safety, please read and understand this manual completely before you attempt to install or operate this unit!

- Please keep this User Manual for future reference. If you sell the unit to another user, be sure that he also receives this instruction booklet.
- Unpack and check the unit carefully that it has not been damaged during transport before using the unit.
- Before operating, ensure that the voltage and frequency of power supply match the power requirements of the unit.
- It's important to ground the yellow/green conductor to earth in order to avoid electric shock.
- The unit is for indoor use only in a dry location.
- The unit must be installed in a location with adequate ventilation, at least 1m from adjacent surfaces. Be sure that no ventilation slots are blocked.
- Disconnect mains power before fuse replacement or servicing.
- Replace fuse only with the same type.
- Make sure there are no inflammable materials close to the unit during operation.
- Use safety cable when fixing this unit.
- In the event of serious operating problem, stop using the unit immediately.
- Never try to repair the unit by yourself. Repair carried out by unskilled people can lead to damage or malfunction.
- Please contact the nearest authorized technical assistance center and always use the same type of spare parts.
- Do not touch any wires during operation as high voltage might be causing electric shock.

CAUTION! TAKE CARE USING THIS EQUIPMENT!

High voltage-risk of electric shock!

3. MAINTENANCE

Periodical to maintain the wash light:

- Check the screw of the spare parts in order to use well.
- Clearing the dust and fragments of the inner wash light, to keep the inner wash light clearly.
- Clearing the lens.
- More dust, smoke and granular can cause appearance of the wash light corrosively-even cause overheated to damage equipment
- **ATTENTION:** Before take the light apart, please cut the power source.

4. CLEANING

- Cutting the power source when the light is cool, to move the cover of the light
- Using the vacuum cleaner or the gas from air compressor to remove the dust of the appearance of the strobeflood
- The lens need clearly once every week, otherwise to reduce the bright.
- The fans need clear once every month, to promise the cool effect.
- Clearing the lens must be take care, because the surface of the lens is easy to damage and cutting, and do not use the liquid to clean.
- The PCB do not use the liquid to clean, must be keep it dry, to avoid short circuit.

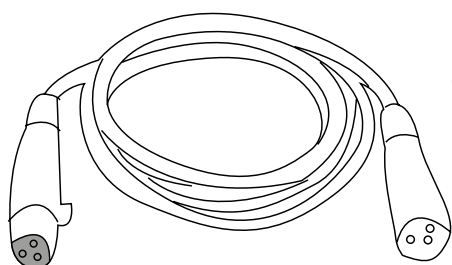
5. DMX SIGNAL CONNECTIONS



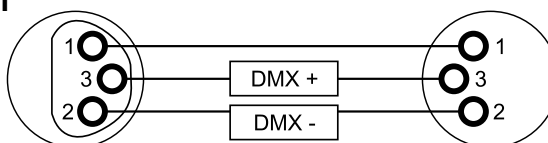
ATTENTION:
DANGER OF LIFE! RISK OF BURNS! RISK OF FIRE! RISK OF SHORT CIRCUIT!

- Be sure to follow figures 2 & 3 when making your own cables.
- Do not connect the cable's shield conductor to the ground lug or allow the shield conductor to come in contact with the XLR's outer casing.
- Grounding the shield could cause a short circuit and erratic behaviour.

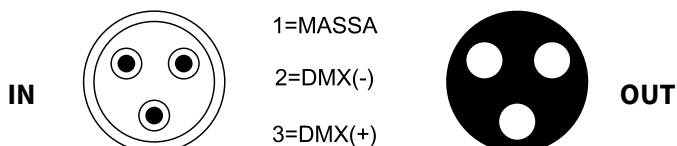
3-PIN XLR TO 5-PIN XLR CONVERSION		
CONDUCTOR	3Pin XLR Female (OUT)	5-Pin XLR Male (IN)
GROUND/SHIELD	Pin 1	Pin 1
DATA COMPLIMENT (-SIGNAL)	Pin 2	Pin 2
DATA TRUE (+SIGNAL)	Pin 3	Pin 3
NOT USED		Pin 4-Do Not Used
NOT USED		Pin 5-Do Not Used



DMX-512 OUT
3-PIN XLR



DMX-512 IN
3-PIN XLR



- Never let the power - cable come into contact with other cables. Handle the power-cable and all mains voltage connections with particular caution !
- Never remove warning or informative labels from the equipment.
- Do not open the equipment and do not modify the equipment.
- Do not connect this equipment to a dimmer-pack.
- Do not switch the equipment on and off in short intervals, as this will reduce the systems life.
- Only use the equipment indoors.
- Do not expose to flammables sources, liquids or gases.
- Always disconnect the power from the mains when equipment is not in use or before cleaning!Only handle the power-cable by the plug. Never pull out the plug by pulling the power-cable.
- Make sure that the available voltage is 110-240v.
- Make sure that the power-cable is never crimped or damaged. Check the equipment and the power-cable periodically.
- If the equipment is dropped or damaged, disconnect the mains power supply immediately.
- Have a qualified engineer inspect the equipment before operating again.
- If the equipment has been exposed to drastic temperature fluctuation (e. g. after transportation) do not switch it on immediately. The arising condensation might damage the equipment. Leave the equipment switched off until it has reached room temperature.
- Only use fuses of same type and rating.
- Repairs, servicing and power connection must only be carried out by a qualified technician. THIS UNIT CONTAINS NO USER SERVICEABLE PARTS.

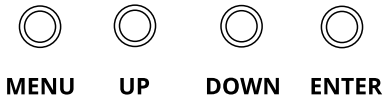
6. OPERATING DETERMINATIONS

- If this equipment is operated in any other way, than those described in this manual, the product may suffer damage and the warranty becomes void.
- In Correct operation may lead to danger e.g.: short-circuit, burns, electric shocks, lamp failure etc.
- Do not endanger your own safety and the safety of others! Incorrect installation or use can cause serious damage to people and property.

4. DIGITAL DISPLAY OPERATION



After starting press MENU enter into main-menu, Press UP/DOWN to select the submenu, and then press ENTER confirm.



LED DISPLAY FUNCTION TABLE:

MENU	VALUE	FUNCTION
AU	Au00-Au16	Automatic mode.
FL	FL00-FL09	Adjustment strobe (Speed: slow to fast)
SP	SP01-SP09	Adjustment Speed (From slow to fast)
So	So01-So02	Sound Check
Sn	Sn01-Sn09	Adjustment microphone sensitivity.
d001	d001-d512 CH4/CH8/CH15	Setting DMX Start Adress / Selection DMX Channels

5. DMX CHANNELS

4 CHANNEL MODE

CHANNELS	VALUE	DESCRIPTION
CH 1	0-255	R dimmer, 0 to 100%
CH 2	0-255	G dimmer, 0 to 100%
CH 3	0-255	B dimmer, 0 to 100%
CH 4	0-255	W dimmer, 0 to 100%

5. DMX CHANNELS

8 CHANNEL MODE

CHANNELS	VALUE	DESCRIPTION
CH 1	0-255	Dimmer, 0 to 100%
CH 2	0-255	R dimmer, 0 to 100%
CH 3	0-255	G dimmer, 0 to 100%
CH 4	0-255	B dimmer, 0 to 100%
CH 5	0-255	W dimmer, 0 to 100%
CH 6	0-255	Strobe (Speed: slow to fast)
CH 7	000-009 0120-249 250-255	Manual dimming Integrated effects Sound control
CH 8	000-255	Adjustment Speed (Slow to fast)

15 CHANNEL MODE

CHANNELS	VALUE	DESCRIPTION
CH 1	0-255	SEGMENT 1: R dimmer, 0 to 100%
CH 2	0-255	SEGMENT 1: G dimmer, 0 to 100%
CH 3	0-255	SEGMENT 1: B dimmer, 0 to 100%
CH 4	0-255	SEGMENT 1: W dimmer, 0 to 100%
CH 5	0-255	SEGMENT 2: R dimmer, 0 to 100%
CH 6	0-255	SEGMENT 2: G dimmer, 0 to 100%
CH 7	0-255	SEGMENT 2: B dimmer, 0 to 100%
CH 8	0-255	SEGMENT 2: W dimmer, 0 to 100%
CH 9	0-255	SEGMENT 3: R dimmer, 0 to 100%
CH 10	0-255	SEGMENT 3: G dimmer, 0 to 100%
CH 11	0-255	SEGMENT 3: B dimmer, 0 to 100%
CH 12	0-255	SEGMENT 3: W dimmer, 0 to 100%
CH 13	0-255	Strobe (Speed slow to fast)
CH 14	000-009 0120-249 250-255	Manual dimming Integrated effects Sound control
CH 15	000-255	Adjustment Speed (Slow to fast)



TEC SHOW



AMPRO

amproweb.com

 /amprogroup

 /amprogroup